

For wall or floor mounting

- **Short adjacent zone.**
- **Three-way spread.**
- **Stabel and rigid construction.**
- **Maintenance free.**
- **Compact design without visible screws or pop rivets**
- **Adjustable adjacent zone.**



Function

PDC/PDR supply air panel is specifically designed for high air volumes. The panel provide a displacement ventilation system giving improved air quality and lower temperatures in the occupied zone than with traditional systems. The panel has a rigid construction with corners made of aluminium profiles. Fixings are also concealed.

The internal REPUS[®]-nozzles provide a constant air distribution over the entire face area without risks of draught. As no filter or foam media is used in manufacture the panel is maintenance free with no risk of clogging.

Design

The panels are manufactured from galvanised sheet steel mounted into aluminium profiles.

Front thickness 1 mm

Standard finish is white (RAL9010).

For wall, ceiling or floor mounting.

Alternative design

Panel can be equipped with adjustable adjacent zone.

Accessories

Duct cover

Base

Applications

Arcades, cinemas, shops, laboratories, industrial premises etc. requiring high air flows linked to attractive appearance.

Specials

Other RAL colours.

Alternative sizes

Reinforced front

The REPUS[®] design system has been used to build special units for many years and hundreds of successful installations have been carried out. We have developed the method to quickly and accurately calculate all necessary data for specials.

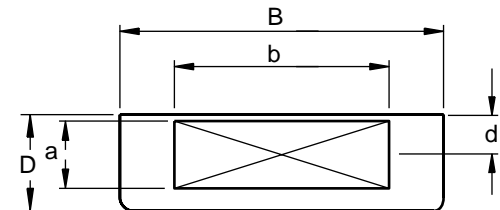
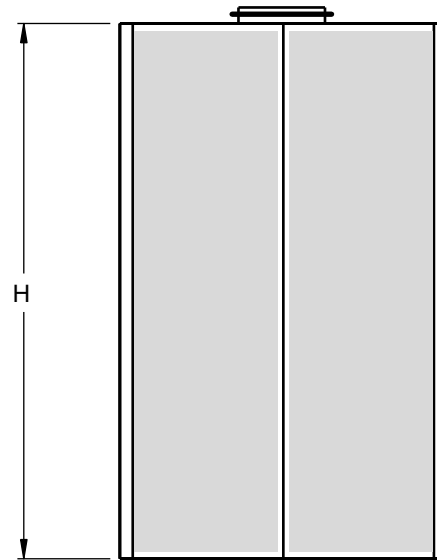
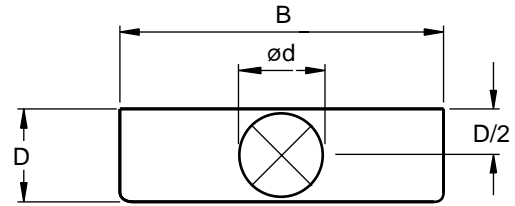
Please contact us for more information.

Technical data

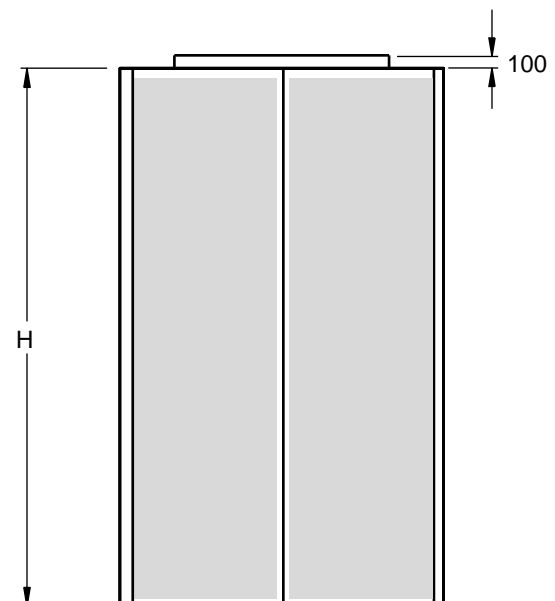
Pressure drops, sound data and adjacent zone are given in the diagrams. Sound levels are shown at 10 m² Sabine.

Dimensions and weights

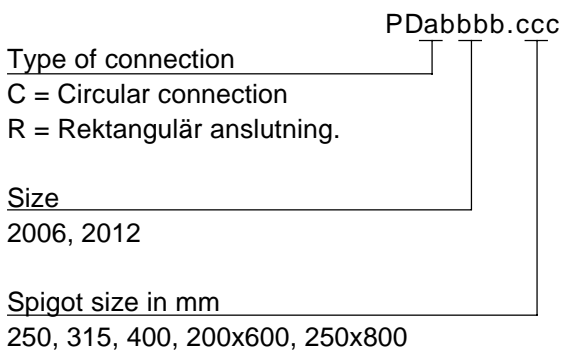
Size	ø d	H	B	D	kg
PDC 2006	250	2000	595	300	40
PDC 2012	315	2000	1195	350	70
PDC 2012	400	2000	1195	450	80



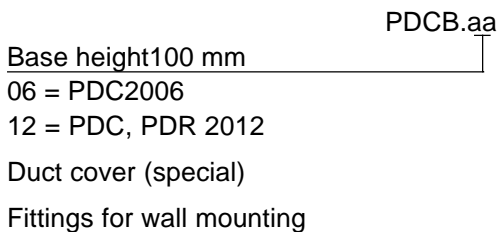
Size	a	b	H	B	D	d	kg
PDR 2012	200	600	2000	1195	220	110	60
PDR 2012	250	800	2000	1195	350	150	70



Product code



Accessories



Descriptive text

REPUS[®] supply air panel.

Type.....

The panel must be equipped with REPUS[®] nozzles for internal air distribution.

Material: Galvanised sheet steel

Paint: White (RAL 9010)

Accessories:

Commissioning

A test nipple is fitted to the Displacement Panel for measuring the internal pressure.

Connect a suitable measuring device to the test nipple with a flexible hose and then adjust the inlet damper to provide a pressure as indicated on the attached diagram.

Please note that this is not the total pressure shown on the main leaflet.

Maintenance

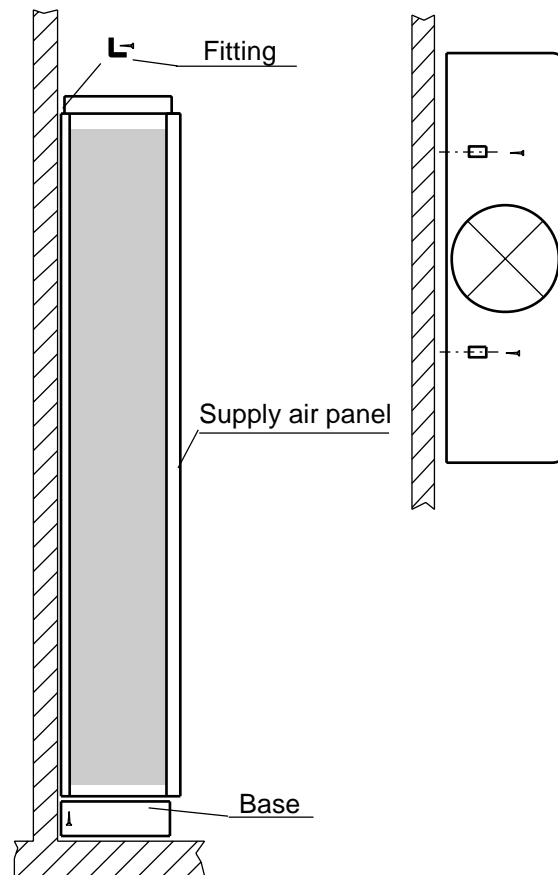
The panel is designed for ease of maintenance. The front is easy to dismantle if cleaning is necessary. To clean the panel use a damp cloth and a mild detergent.

Installation

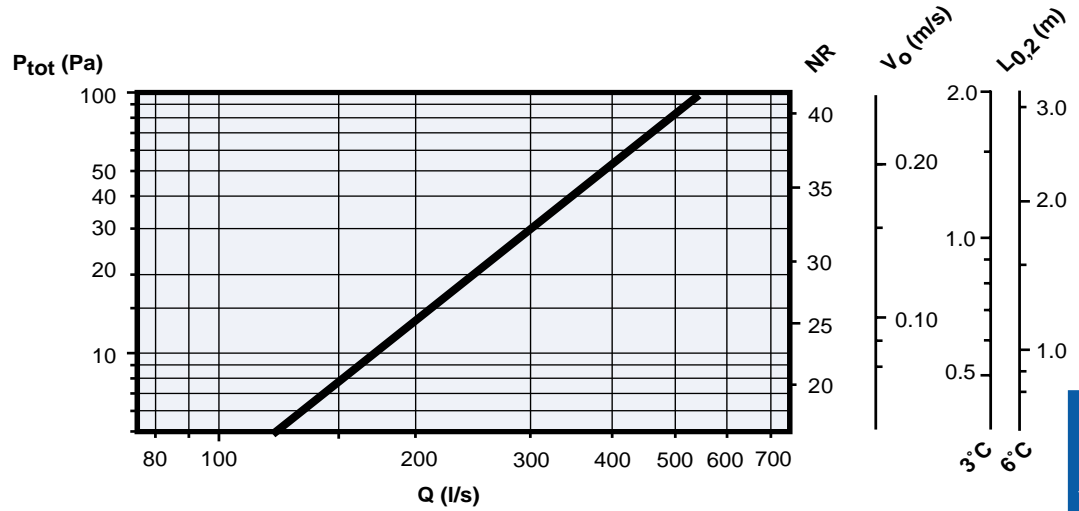
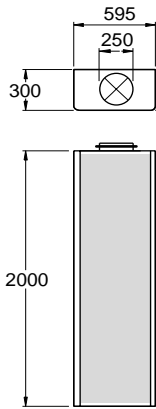
The panels are designed for wall, floor or ceiling mounting.

For wall mounted units, use our standard accessory which fits between the top of the terminal and the wall.

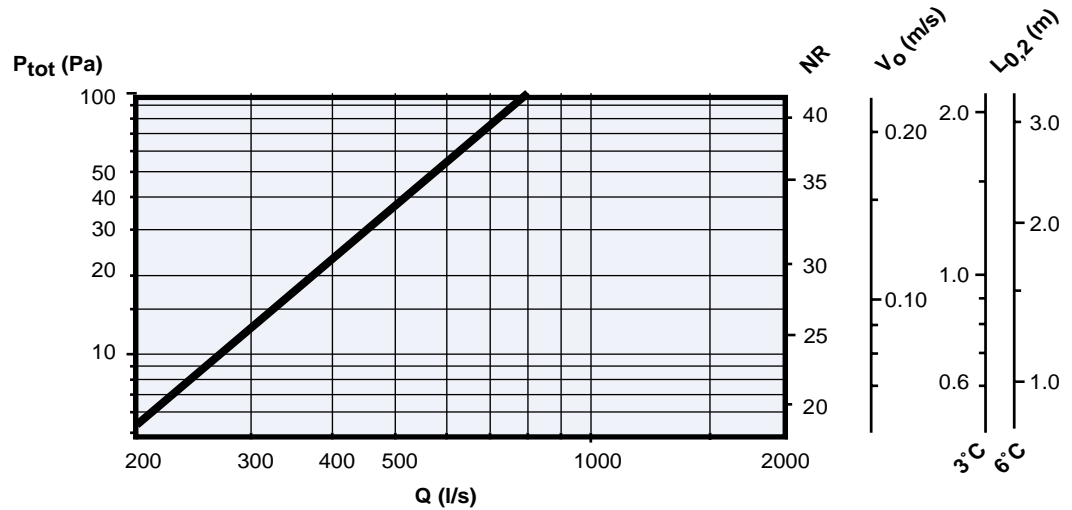
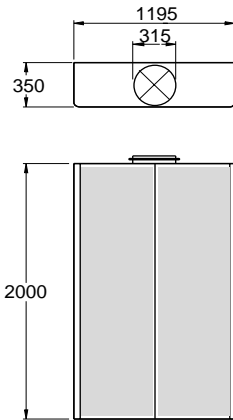
A standard base 100mm high can be used if required.



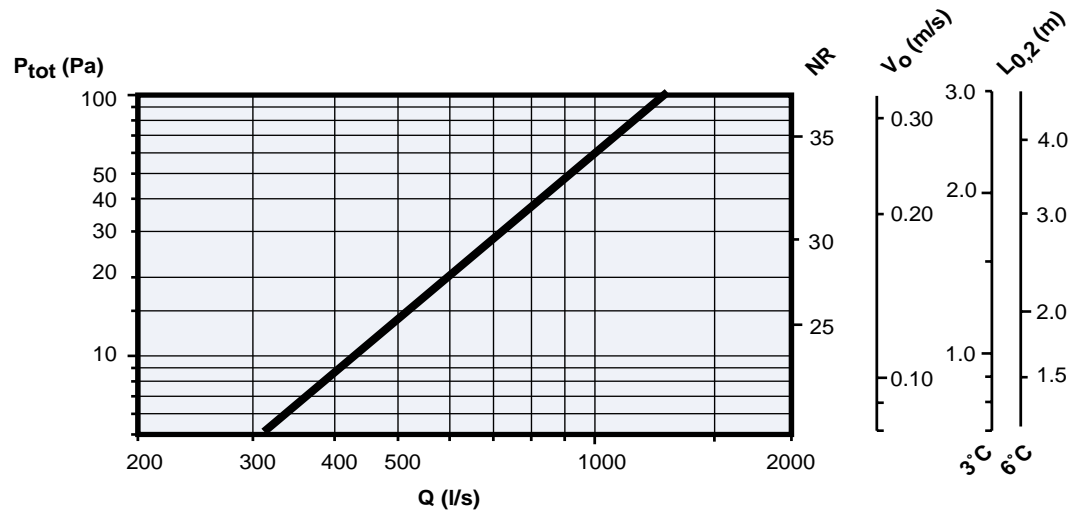
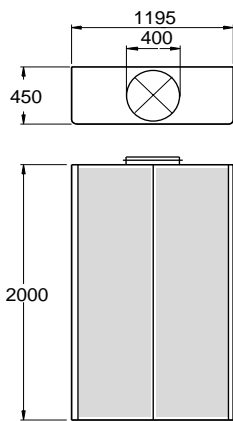
PDC 2006.250



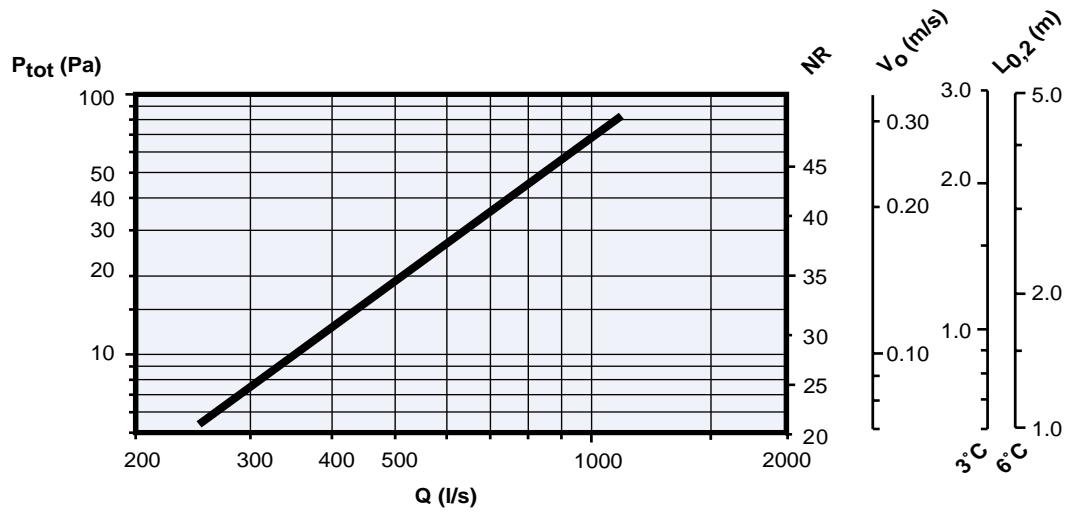
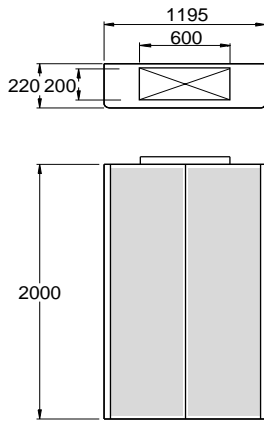
PDC 2012.315



PDC 2012.400



PDR 2012.200x600



PDR 2012.250x800

